

A Budding Romance: Enemies to Lovers at Rosewood High

In the hallowed halls of Rosewood High, amidst the bustling hallways and whispered secrets, a captivating tale unfolds. It's a story of two sworn enemies, Emily and Ethan, whose intense animosity masks a simmering chemistry that threatens to consume them both.

Emily: The Headstrong Rebel

Emily Carter, the fiery and outspoken rebel of Rosewood High, is known for her sharp wit and unwavering determination. Her rebellious nature has always kept her at odds with Ethan, the star quarterback and golden boy of the school.



PAINE: A High School Enemies to Lovers Romance (Rosewood High Book 2) by Tracy Lorraine

★★★★☆ 4.6 out of 5

Language	: English
File size	: 2633 KB
Text-to-Speech	: Enabled
Screen Reader	: Supported
Enhanced typesetting	: Enabled
X-Ray	: Enabled
Word Wise	: Enabled
Print length	: 370 pages
Lending	: Enabled

FREE

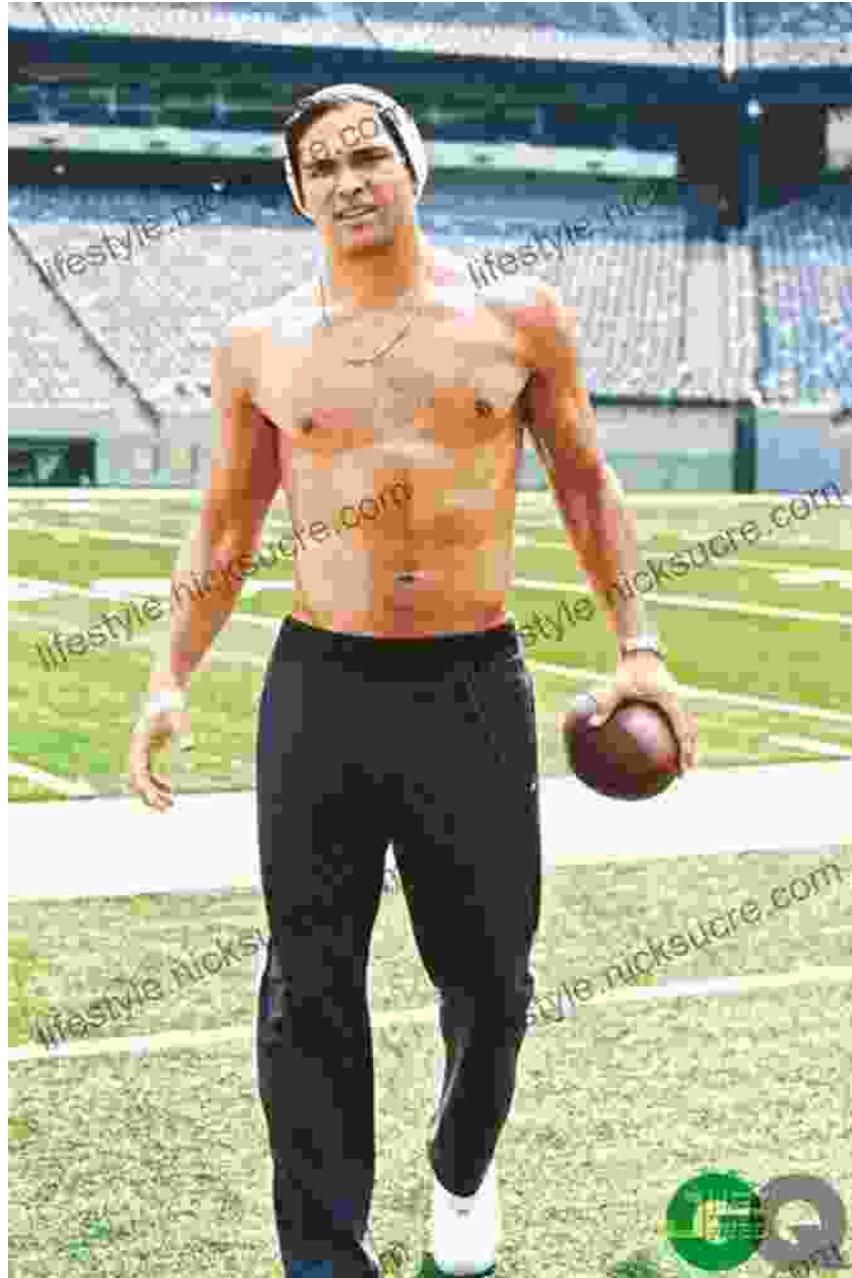
DOWNLOAD E-BOOK





Ethan: The Golden Boy

Ethan James is the epitome of perfection in the eyes of Rosewood High. As the star quarterback and captain of the football team, he enjoys immense popularity and admiration. However, beneath his charming facade lies a competitive edge that has always fueled his rivalry with Emily.



Ethan James: The Golden Boy

A Twist of Fate

One fateful day, Emily and Ethan find themselves thrown together during a school project. Forced to work side by side, their initial clashes gradually give way to stolen glances and unexpected moments of connection. As

they delve deeper into the project, they realize there's more to each other than meets the eye.

Forbidden Passion

Despite their long-standing animosity, Emily and Ethan cannot deny the intense attraction simmering between them. Their forbidden passion ignites a whirlwind of emotions, forcing them to confront their true feelings for each other.



The Social Divide

Their budding romance faces significant obstacles. The social divide between them is vast, and the judgment of their peers threatens to tear them apart. Emily's friends fear that she will lose her rebellious spirit, while Ethan's teammates mock him for falling for the "rebel girl."



The Social Divide

Moments of Vulnerability

As they navigate the challenges of their forbidden love, Emily and Ethan find solace in moments of vulnerability. They share their fears, dreams, and deepest secrets, forging an unbreakable bond that transcends their initial hostility.



A Transformation of Hearts

Through their forbidden love, Emily and Ethan undergo a profound transformation. Emily sheds her rebellious shell and discovers a newfound sense of vulnerability, while Ethan learns to embrace his softer side and confront his own insecurities.



A Transformation of Hearts

A Forbidden Love Conquers All

Despite the obstacles and the disapproval of others, Emily and Ethan's forbidden love perseveres. They fight for their right to be together, proving

that even the fiercest of enemies can find love in the most unexpected of places.



The story of Emily and Ethan is a testament to the transformative power of love. It's a tale that demonstrates how even the most bitter enemies can find redemption and unexpected happiness in each other's arms. Their love

story serves as a reminder that love knows no bounds and can conquer even the most formidable obstacles.



PAINE: A High School Enemies to Lovers Romance (Rosewood High Book 2) by Tracy Lorraine

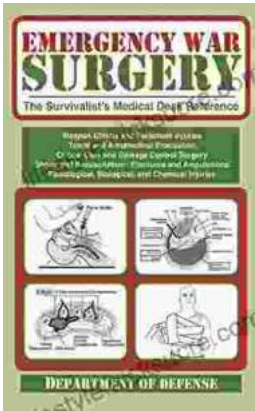
★★★★☆ 4.6 out of 5

Language : English
File size : 2633 KB
Text-to-Speech : Enabled
Screen Reader : Supported
Enhanced typesetting : Enabled
X-Ray : Enabled
Word Wise : Enabled
Print length : 370 pages
Lending : Enabled



Unveiling the Hidden Gem: Moon, Virginia - A Washington DC Travel Guide

Nestled within the picturesque Loudoun Valley, just a stone's throw from the bustling metropolis of Washington DC, lies a charming town called Moon, Virginia....



The Ultimate Survivalist's Medical Guide: A Comprehensive Review of The Survivalist Medical Desk Reference

In the realm of survivalism, medical knowledge stands as a paramount skill. The ability to diagnose and treat injuries and illnesses in remote or...